

COWRA COUNCIL NOTICEBOARD

6th January 2025



TRIAL PERIOD : 2 JAN - 5 APRIL 2025

EXTENDED HOURS AT THE COWRA LIBRARY

Weekdays the library will close one hour later - **9.30am to 6.00pm.**

Saturdays the library will remain open a extra four and a half hours - **9.30am to 4.30pm.**



77 DARLING STREET COWRA

JOIN OUR TEAM

COWRA SHIRE COUNCIL

Material Recycling Facility Attendant

Full Time

Application closes 19th January



PLEASE FIND MORE INFORMATION UNDER THE CURRENT VACANCIES PORTAL AT : WWW.COWRACOUNCIL.COM.AU

APPLY NOW



CLOSED

The Material Recycling Facility will be
CLOSED
on the 26th and 27th of January.
Garbage and recycling run as normal.

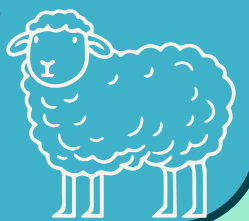
Cowra saleyards eID – Key Changes coming 1 January 2025

The NSW Department of Primary Industries and Regional Development (NSW DPIRD) is reminding livestock producers and industry stakeholders that mandatory electronic identification (eID) is set to take effect from 1 January 2025.

This means :

- All lambs born from 1 January 2025 must be tagged with an eID device prior to leaving the property of birth.
- From 1 January 2025, any sheep with an eID tag must be scanned at the saleyards and the movement uploaded to the NLIS database.

To help us make this transition a smooth one please observe the saleyards curfew and ensure all deliveries are at the yards by 10am prior to sale.





A fire broke out at the Material Recycling Facility on Friday evening. A potential cause of the fire may have been a damaged lithium battery.

Council is urging the community to dispose of lithium batteries correctly by not placing them in the red or yellow bin but by taping both ends and using the Community Recycling Centre to recycle the batteries.

When disposed of correctly, 95 per cent of battery components can be recycled into new products.

 Follow us on Facebook
Cowra Council

 Follow us on Instagram
cowracouncil

 Email us at
council@cowra.nsw.gov.au

 Private Bag 342 Cowra NSW 2794
116 Kendal Street, Cowra 2794