

**Analytical Results - (MRF)  
GLENLOGAN ROAD MATERIAL RECYCLING FACILITY  
& LANDFILL SITE**

EPA License Number

6435

Link to Licence

<https://apps.epa.nsw.gov.au/prpoeoapp/Detail>

Licensee Name

See link above for full licence details  
Cowra Shire Council

Licensee Address

Private Bag 342, Cowra NSW 2794

Location of Monitoring Point

GLENLOGAN ROAD MATERIAL RECYCLING

Scheduled Activity

Non-thermal treatment of general waste  
Waste disposal by application to land

Units of Measure

Listed below

Monitoring points

Listed below, also see map

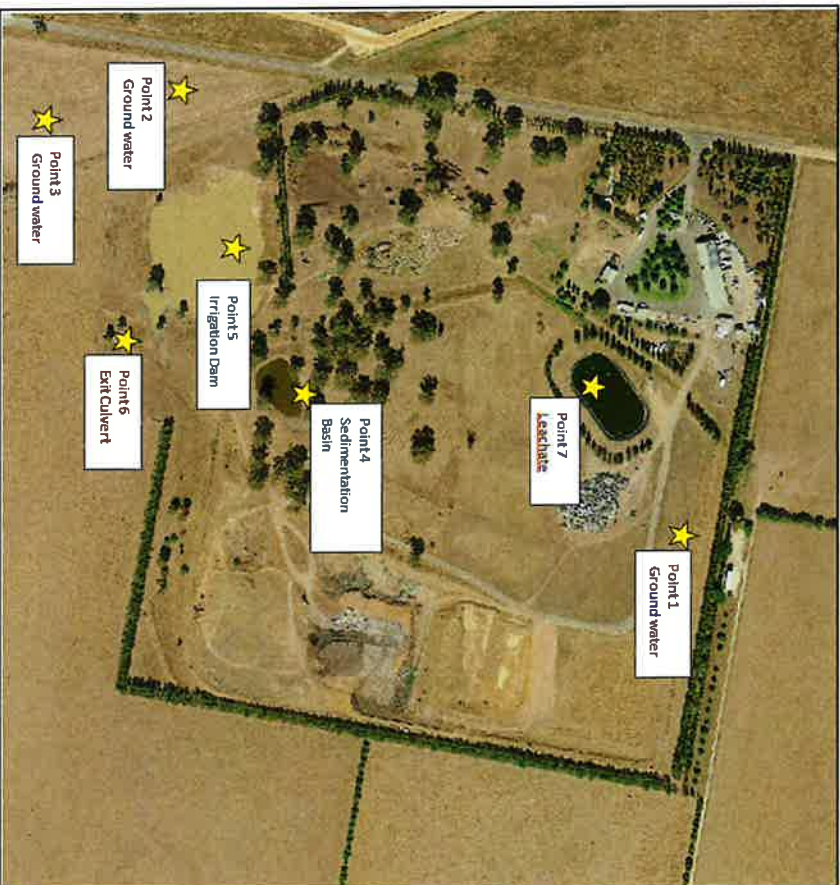
Date Published

26/04/2024

Frequency of Monitoring

Monitoring Points 1, 2, 3, 4, 5, 6 and 7 twice a year

Map of Monitoring Points



## 2023-2024 REPORTING

Sampling twice a year for Points 1,2,3,7			Results			
Pollutant	Limits set by EPA	Reporting Limit set on Lab Report	Monitoring Point 1 Ground Water	Monitoring Point 2 Ground Water	Monitoring Point 3 Ground Water	Monitoring Point 7 Leachate
Ammonia	None	0.01	19/10/2023	4/03/2023	19/10/2023	4/03/2023
Biological Oxygen Demand	None	5	<0.01	<0.01	<0.01	0.02
Calcium	None	0.2	<5	<5	<5	53
Chloride	None	1	32	29	21	130
Fluoride	None	0.1	120	140	17	23
Iron	None	0.005	0.47	0.43	0.39	25
Magnesium	None	0.1	<5	13	55	0.55
Manganese	None	0.001	25	24	14	120
Nitrate	None	0.005	<1	<1	<1	16
Potassium	None	0.1	1.4	1.8	2.7	3
Sodium	None	0.5	1.5	1.5	0.5	0.6
Standing Water Level	None	N.A	100	110	21	0.6
Sulfate	None	1	24	24	21	31
Total Organic Carbon	None	0.2	18	19	7.6	22
Total Phenolics	None	0.01	1.5	1.4	0.6	8.3
Alkalinity	None	5	<0.1	<0.05	<0.1	0.7
Conductivity	None	2	240	210	130	<0.05
pH	None	0	1000	900	340	130
Total Suspended Solid	None	5	7.2	7.4	6.8	380
			NA	NA	NA	54000
						110
						83
						<0.05
						160
						83000
						9.8
						8.4
						NA
						NA

Sampling twice a year for Points 4,5 and 6			Results			
Pollutant	Limits set by EPA	Reporting Limit set on Lab Report	Monitoring Point 4 Sedimentation Basin	Monitoring Point 5 Irrigation Dam	Monitoring Point 6 Exit Culvert	
Alkalinity	None	5	19/10/2023	4/03/2023	19/10/2023	4/03/2023
Conductivity	None	2	150	130	96	58
pH	None	0	4700	980	2100	130
Total Suspended Solid	None	5	7.4	7.2	7.7	6.8
			25	16	51	110
						210



## 2021-2022 REPORTING

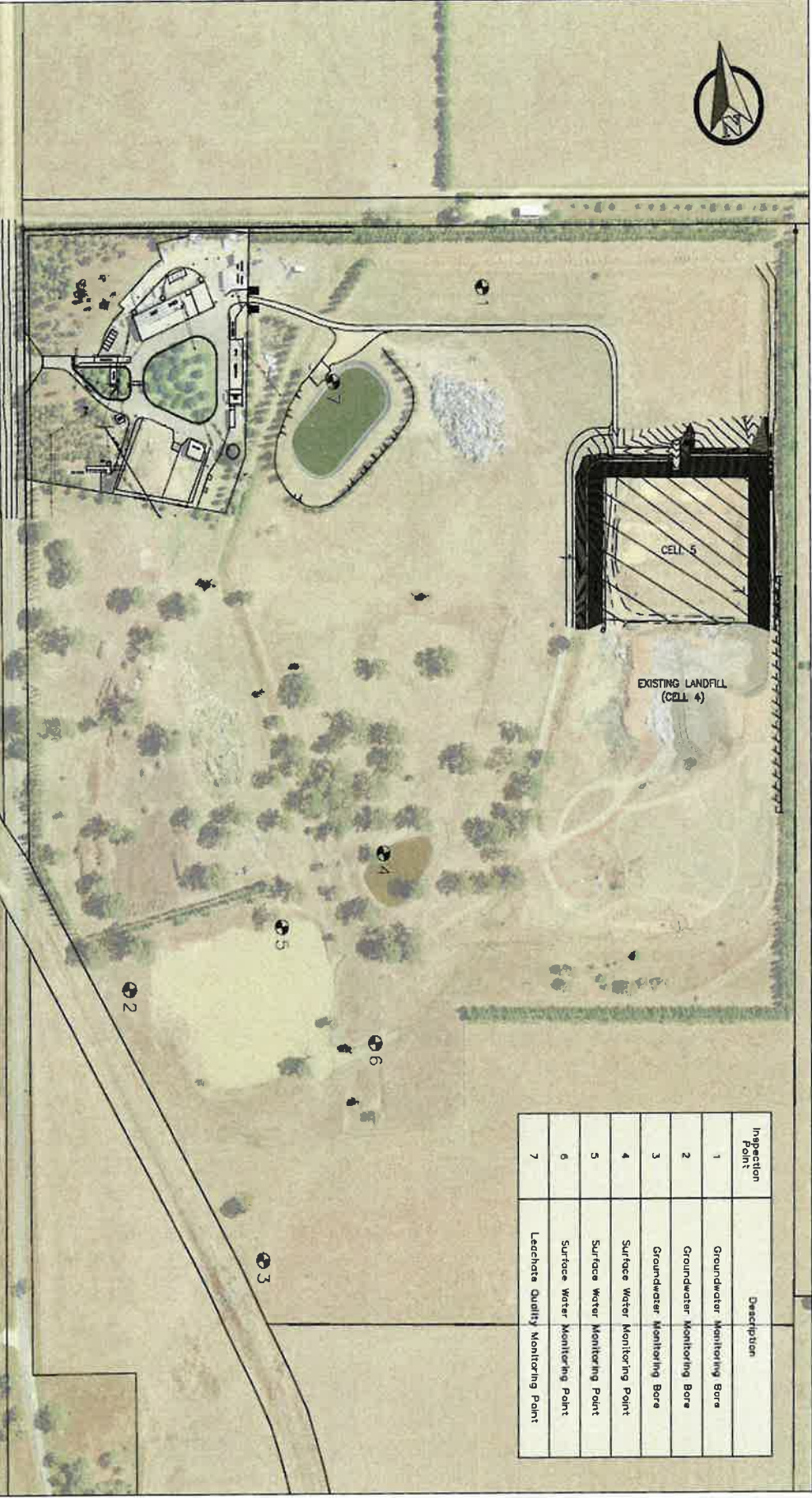
Sampling twice a year for Points 1,2,3,7			Results							
Pollutant	Limits set by EPA	Reporting Limit set on Lab Report	Monitoring Point 1 Ground Water		Monitoring Point 2 Ground Water	Monitoring Point 3 Ground Water	Monitoring Point 7 Leachate			
Ammonia	N O	0.01			8/09/2021	22/12/2021	8/09/2021	22/12/2021		
Biological Oxygen Demand		5	N O	N O	0.04	0.15	0.03	0.15	42	17
Calcium		0.2			<5	<5	<5	<5	36	26
Chloride	L I	1			21	21	21	20	200	160
Fluoride		0.1	S a	S a	71	47	53	47	16000	21000
Iron		0.005	m p	m p	0.76	0.86	0.77	0.86	0.24	0.1
Magnesium		0.1	i l	i l	<5	0.13	<5	0.14	120	440
Manganese		0.001	s e	s e	16	17	17	17	82	88
Nitrate		0.005	s e	s e	<1	0.006	<1	0.006	2100	660
Potassium		0.1			1.9	3.1	3.1	3.1	<0.25	0.1
Sodium		0.5	t a	t a	1.3	1.6	1.3	1.5	220	170
Standing water Level		N.A	k e	k e	84	88	85	88	8600	11000
Sulfate		1	n e	n e	24	24	21	22	NA	NA
Total Organic Carbon		0.2			14	12	12	12	9.3	19
Total Phenolics		0.01			1.6	2.2	1.6	2.3	100	86
Alkalinity		5			<0.01	<0.1	<0.01	<0.1	0.02	0.11
Conductivity		2			220	210	190	220	530	310
pH		0			600	560	500	560	48000	48000
Total Suspended Solids		5			6.8	7.4	7	7.4	7.6	8.2

Sampling twice a year for Points 4,5 and 6		Results				
Pollutant	Limits set by EPA	Reporting Limit set on Lab Report	Monitoring Point 4 Sedimentation Basin		Monitoring Point 5 Irrigation Dam	Monitoring Point 6 Exit Culvert
Alkalinity	L N I	5	8/09/2021	22/12/2021	8/09/2021	22/12/2021
Conductivity	o m	2	67	62	78	68
pH	i t	0	150	8000	180	440
Total Suspended Solids	s	5	7.1	7.1	7.1	7.4
			39	89	<5	15
					8/09/2021	22/12/2021
					51	88
					100	190
					7	7.1
					31	31

## 2020-2021 REPORTING

Sampling twice a year for Points 1,2,3,7			Results				
Pollutant	Limits set by EPA	Reporting Limit set on Lab Report	Monitoring Point 1 Ground Water	Monitoring Point 2 Ground Water	Monitoring Point 3 Ground Water	Monitoring Point 7 Leachate	
Ammonia	N o l i m i t s	0.01	20/05/2020	2/12/2020	20/05/2020	2/12/2020	
Biological Oxygen Demand		5	0.18	0.06	0.08	0.03	0.04
Calcium		0.2	7	<5	<5	<5	14
Chloride		1	18	26	20	20	22
Fluoride		0.1	28	63	6.1	6.1	0.04
Iron		0.005	0.54	0.66	0.33	0.47	0.15
Magnesium		0.1	14	<5	5	12	6
Manganese		0.001	14	21	14	14	17
Nitrate		0.005	3	5	5	5	<1
Potassium		0.1	0.14	0.41	2.6	2.7	1.4
Sodium		0.5	1.5	1.5	0.6	1	66
Standing water Level		N.A	58	84	17	16	86
Sulfate		1	8.2	12	6.1	7.2	1.4
Total Organic Carbon		0.2	5.9	1.7	2.1	1.1	33
Total Phenolics		0.01	<0.01	<0.01	<0.01	<0.01	<0.01
Alkalinity		5	180	250	120	130	110
Conductivity		2	430	630	270	260	820
pH	0	7.2	6.8	7.2	7.2	9	
Total Suspended Solid	5	NA	NA	NA	NA	NA	

Sampling twice a year for Points 4,5 and 6			Results			
Pollutant	Limits set by EPA	Reporting Limit set on Lab Report	Monitoring Point 4 Sedimentation Basin	Monitoring Point 5 Irrigation Dam	Monitoring Point 6 Exit Culvert	
Alkalinity	L i m i t s	5	20/05/2020	2/12/2020	20/05/2020	
Conductivity		2	67	140	78	98
pH		0	150	510	180	200
Total Suspended Solid		5	7.1	7.2	7.1	7.2
			39	130	<5	6



Inspection Point	Description
1	Groundwater Monitoring Bore
2	Groundwater Monitoring Bore
3	Groundwater Monitoring Bore
4	Surface Water Monitoring Point
5	Surface Water Monitoring Point
6	Surface Water Monitoring Point
7	Leachate Quality Monitoring Point

NOTES / AMENDMENTS :		SCALE : 1:2500		DATE :	
DRAWN BY :		PROJECT CODE :		CHECKED BY :	
DATE :		DATE :		DATE :	
APPROVED BY :		DATE :		DATE :	
PROJECT AND RECOMMENDED APPROVALS :		DATE :		DATE :	
MANAGER DATE :		DATE :		DATE :	
		<b>MATERIALS RECYCLING FACILITY</b> EPA LICENCE 6435 INSPECTION POINT(S)			
				DIVISION <b>A</b> OF SHEETS <b>1</b>	